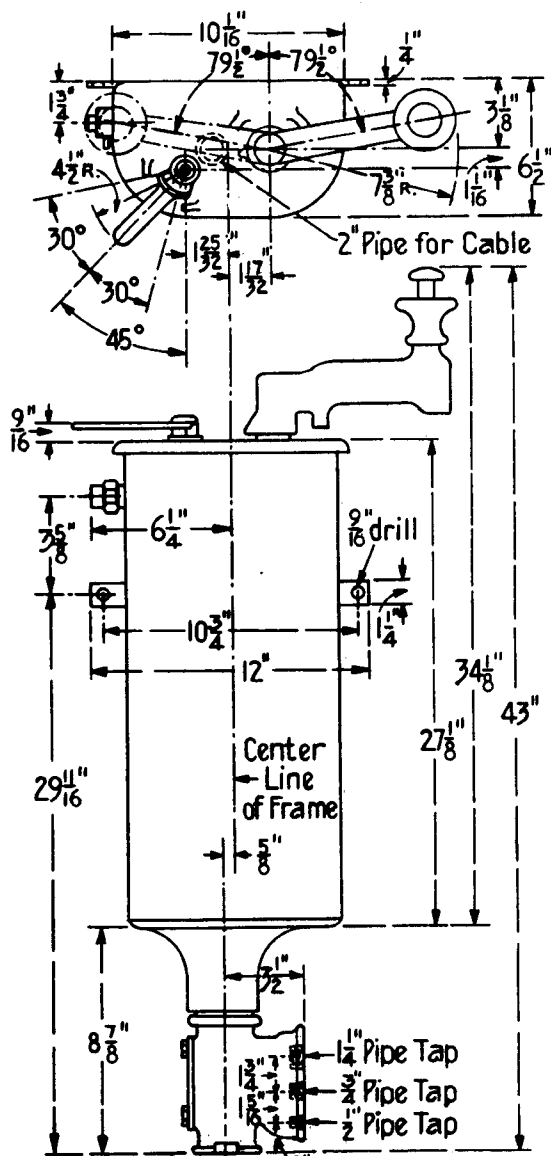
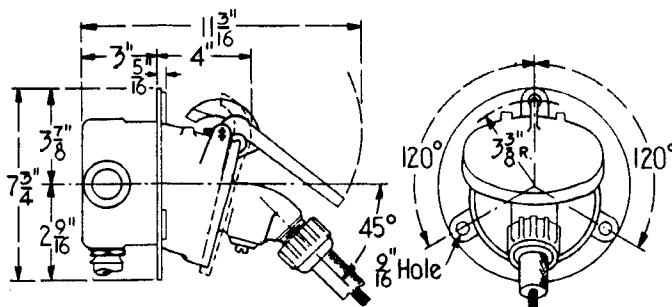


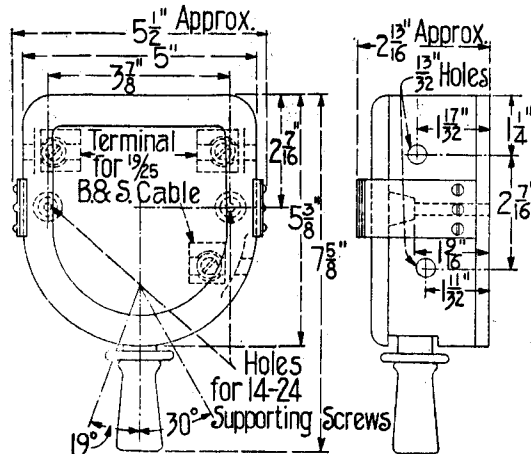
DIMENSIONS OF ELECTRICAL APPARATUS USED WITH TYPE M RAILWAY EQUIPMENT



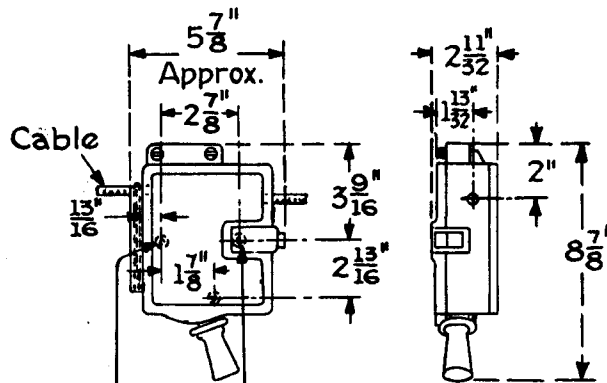
C-169-A Controller
Approx. Weight 85 lb.



DA-69-B Coupler Socket
DC-66-C Coupler Plug
Approximate Weight 18.5 lb.



MS-14-G Switch
Approx. Weight 4 lb.



Holes for 14-24 Supporting Screws
MS-46-H Switch
Approx. Weight 4 1/2 lb.

For REFERENCE ONLY unless endorsed on back.

DISTRICT OFFICES MAY APPROVE THIS PRINT FOR CONSTRUCTION.

2 JAN., 1924

No. 15383

IMPROVED TYPE CHUTES.

ORIGINAL TYPE CHUTES.

IMPROVED TYPE CHUTES,
SHOWING AUXILIARY COVER.

22

14 12

61



Method of making Cable Connections in Type M Control Couplers



Fig 1
Insulation removed



Fig 2
Wires formed into „T” and
pinched flat



Fig 3
Conductor inserted into
Terminal. Wires projecting
from Slots.



Fig 4
Terminal pinched to-
gether, by means of Gas
Pliers to firmly grip the
insulation.



Fig 5
Wires bent close to Ter-
minal (on one side) ready
for soldering.



Fig 6
Soldered (on one side
only).

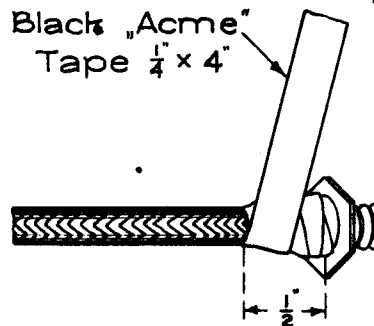


Fig 7
Tape to Dimension

Checked *W. T. Dorr*

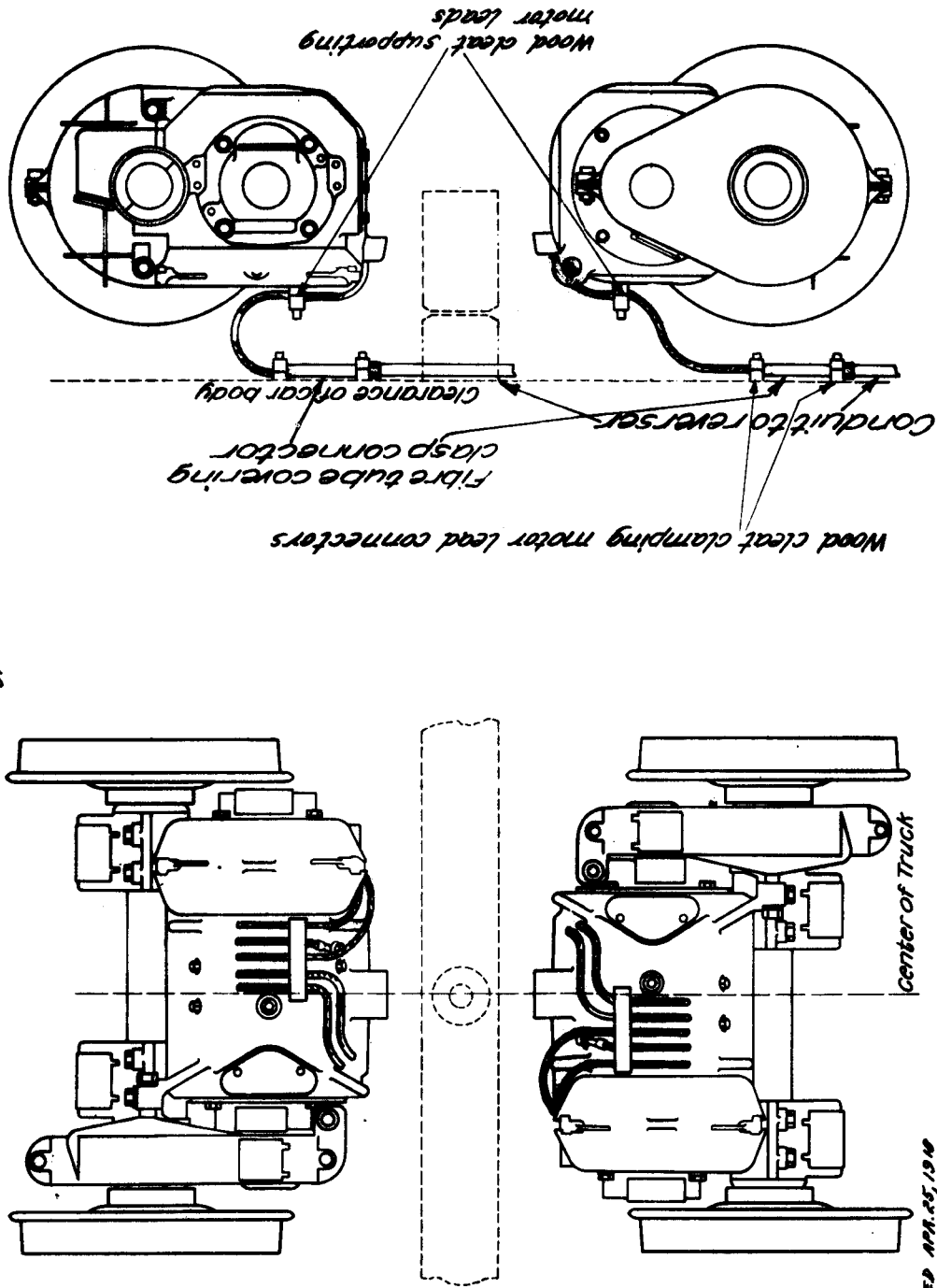
Engineering Dept.

D.S. 1981

General Electric Company

7 Aug 1901

Diagram of Railway Motor Connections to Car Body
for use with Type M Control



② REVISED APR. 25, 1914

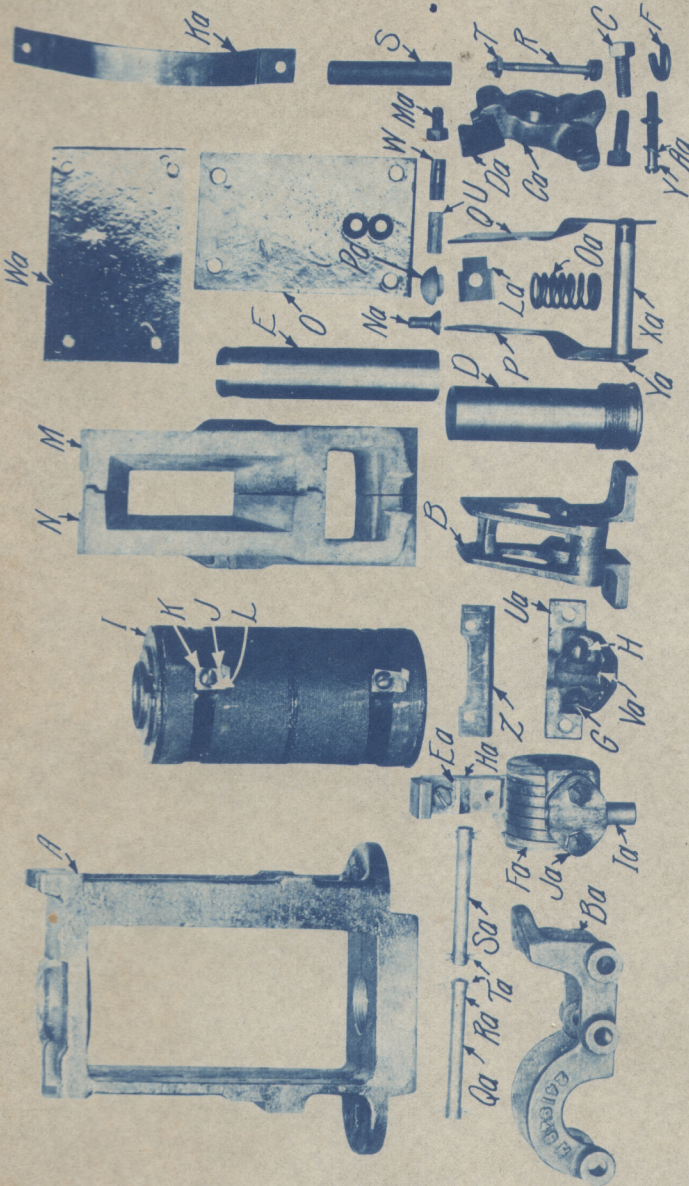
Checked *[Signature]*
Approved *[Signature]*

12 Apr. 1914
1-2-5

Engineering Dept.
General Electric Company

DS 22420

Informal Catalogue.



- A Frame with Bushing
- B Bracket
- C Cap Screw Cat. No. 15212
- D Fixed Pole
- E Plunger
- F Lock Washer (1 3/32" X 7/8" X 3/64")
- G Cap Screw Cat. No. 26202
- H Lock Washer Cat. No. 47173
- I Operating Spool, complete
- J Cat. No. 22778
- K Lock Washer Cat. No. 22780
- L Screw Cat. No. 19082
- M Arc Chute Side, Left
- N " " " Right
- O " " " Back
- P Pole Piece, Right
- Q " " " Left
- R Stud for Arc Chute
- S Insulation Tube for Magnet Core
- T Nut Cat. No. 13680
- U Insulating Sleeve for Arc Chute, Back upper (1/4" X 3/8" X 1")
- W Insulating Sleeve for Arc Chute, Back lower (1/4" X 3/8" X 1 3/16")
- Y Screw Cat. No. 48312
- Z Washer Plate for Arc Deflector
- Ra Washer (1 1/64" X 1/2" X .015 Brass)
- Ba Operating Lever
- Ca Contact Lever
- Da Contact Tip
- Ea Washer Plate for Contact Tip
- Fa Blow-out Spool, complete with Contact Base, Rivets & Terminals
- Ha Contact Base with Rivets
- Ia Terminal for Blow-out Coil
- Ja Lock Washer (2 1/64" X 2 3/32" X 3/32")
- Ka Shunt, complete with Guards
- La Clamping Plate for Shunt
- Ma Screw (5/16" - 18, 3/8" Hex. H. Slot)
- Na Screw Cat. No. 51726
- Oa Spring
- Pa Insulation Plug for Spring
- Qa Pin for Operating Lever and Bracket
- Ra " " " and Contact Levers
- Sa " " " Lever and Plunger
- Ta Spring Cutter Cat. No. 4030
- Ua Terminal for Frame, complete with Cap
- Va Cap for Terminal
- Wa Insulation for Arc Chute Back
- Xa Magnet Core
- Ya Screw Cat. No. 51726

In ordering, give name of part or Cat. No. reference letter and photograph number (303565)

303565 Repair parts of the D.B-160, Form A Contactor